

INFRARED TOUCH SCREEN SPECIFICATION

SERIES _____ **R Series** _____

MODEL _____ **RN26-N03-T** _____

EDITION _____ **A0** _____

DATE _____ **2010.06.04** _____

DRAWN _____

CHECKED _____

APPROVED _____

CONFIRM _____



CONTENTS

1. MECHANICAL	3
2. TOUCH CHARACTERISTICS	3
3. ELECTRICAL.....	4
4. ENVIRONMENT.....	4
5. SOFTWARE (Firmware)	4
6. INTERFACE.....	5
7. DRAWING	6
8.INSTALLATION METHOD.....	7



RN26-N03-T

1. MECHANICAL

Housing	Sheet Iron
Touch panel size (out line)	624.9(W) ×413.9(D) ×9(H)mm
Active area	550.0(W)×344.0(D)mm
Weight	2.4Kg
Drawing	Refer to .Appendix 7.

2. TOUCH CHARACTERISTICS

Input Method	Finger or touch pen
Touch Activation Force	Non Minimum activation force
Position Accuracy	2mm
Resolution	4096(W) × 4096(D)
Response Time	Touch: 16ms
	Drawing : 16ms
Cursor Speed	120dot/sec
Glass	3mm glass, Transparence : 92% ~ 100%
Optics Number	108(W)×67(D) pcs
Optics Cell Area	5.08(W)×9.00(D)mm²
Object Touch Size	≥ Ø5mm
Touch Intensity	Over 60 millions single point touch



3. ELECTRICAL

Operating Voltage	DC 4.5V ~ DC 5.5V	
Power	0.5 W (100mA at DC 5V)	
Anti -Static Discharge	Touch Discharge, Grade 2: Lab Vol 4KV	Standard B
	Air Discharge, Grade 3: Lab Vol 8KV	
Power Supply	PS/2 USB	

4. ENVIRONMENT

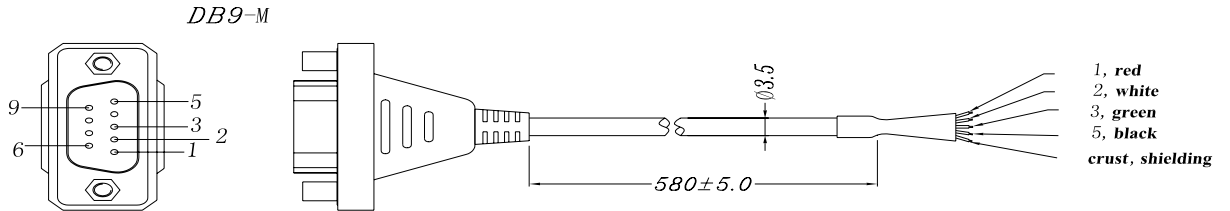
Temperature	operating: -10 °C ~ 50 °C
	storage: -30°C ~ 60 °C
Humidity	operating: 20% ~85%
	storage: 0%~95%
Relative Humidity	40 °C, 90% RH
Anti – light Test	Incandescent lamp (220V,100W) , operating distance over 350mm
Altitude	3,000m
Interface	RS232(C)
Detection Method	Infrared rays
Seal Ability	IP65
Working Environment	Under sunlight ,indoor and outdoor
Application of Display	LCD

5. Software (Firmware)

Scanning	Auto full screen scanning
Touch Trigger	Drop,raise,move on plane
Output	Coordinate output

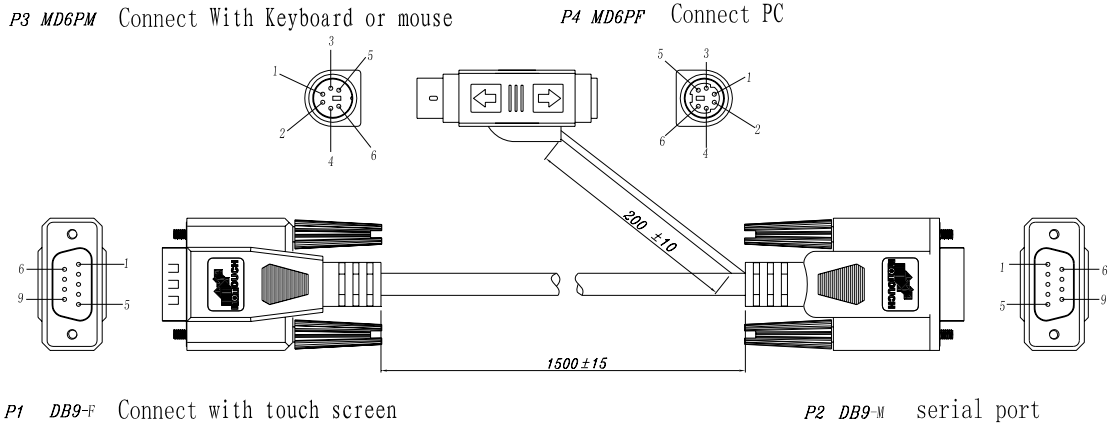
6. Cable information

6.1 DB9 Cable

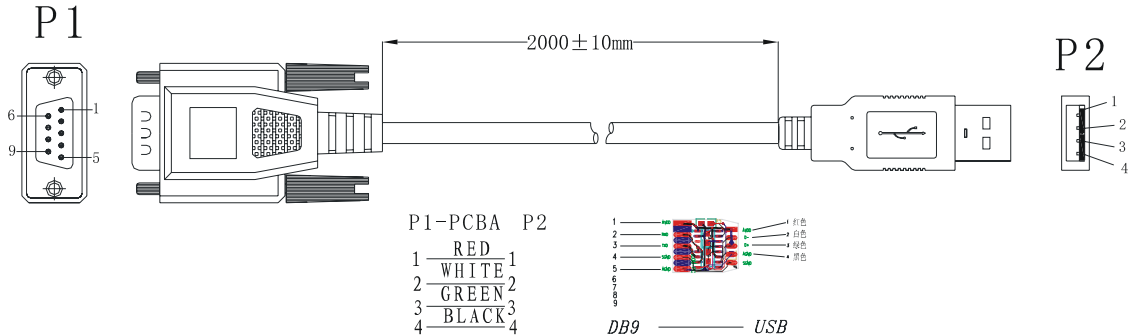


PIN 1	red
PIN 2	white
PIN 3	green
PIN 4	black
CRUST	shielding

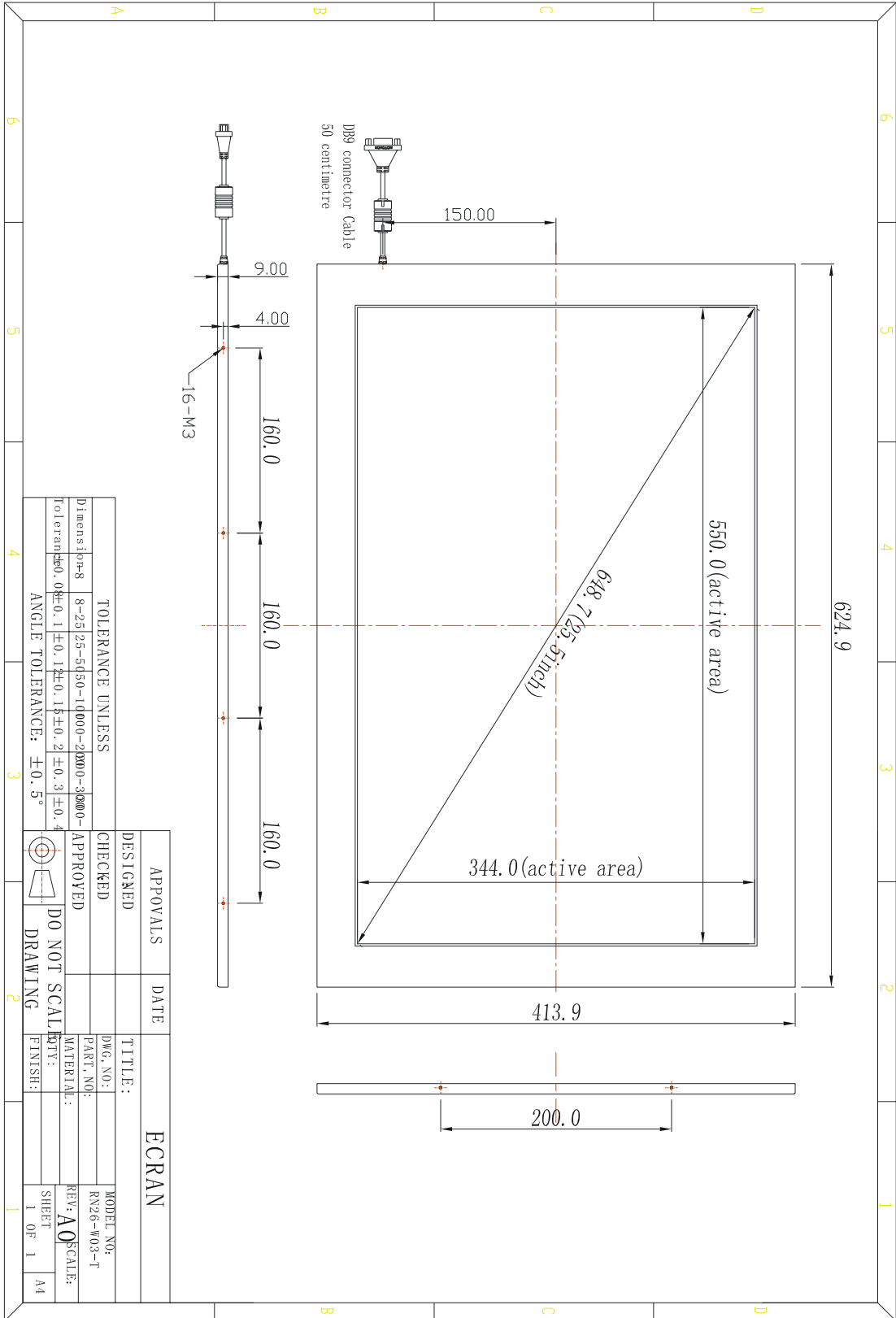
6.2 Interface Cable-DB9(F/M)+MD6(F/M) Cable



6.3 DB9/M+USB Interface cable



7. drawing



8.INSTALLATION METHOD

